

# Pay it Forward Replenishment Blood Drive & Bone Marrow Donor Registry



To Honor Anni Mayer's  
& Amy Charewicz's  
Battles against MDS & Leukemia

**Saturday, October 11, 2014**

8:00 a.m. – 2:00 p.m.

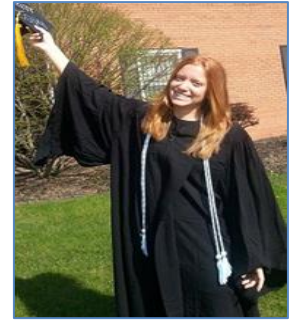
The Society of Danube Swabians

625 E. Seegers Road

(near Golf and Wolf Roads)

**DesPlaines, IL**

<http://www.donauchicago.com/about/directions>



The Society of the Danube Swabians is a charitable organization whose mission is to help all those in our community. We support the Des Plaines Self Help Closet and Food Pantry with food and financial donations throughout the year and support other Des Plaines community organizations, as well as other 501C3 charitable organizations.



**Blood Drive for everyone.... ( Blood Drive Code 650B )**

If you cannot make it that day, you may go to LifeSource  
<http://www.lifesource.org/donate-blood/where-to-donate>  
and give them the code.

Please contact us at the numbers below to let us know  
you have participated in honor of Anni and/or Amy.



If you choose to make a financial contribution to **Be The Match**, please include the following information:

**Honoree Information:**  
Ms. Amy Charewicz

**Notification Recipient fields:**  
Ms. Doris Charewicz  
1375 Elmhurst Road  
Des Plaines, IL 60018, USA

**Bone Marrow Donor Registry - Targeting 18-44 year olds on site.**  
(Those 45 to 60 who wish to register can make a donation of \$100 to cover the cost, or help with some fund raising events.)

Registering is easy. Donating is more extensive than donating blood, but is an awesome gift. Trained volunteers will be on site to help you register. If you want to learn more visit:

<http://www.bethematch.org/Support-the-Cause/Donate-bone-marrow/>

If you do not or cannot register but still want to help, financial contributions are being accepted at *Be The Match*. At the top of the donation page there is a yellow box to enter an honoree name. ( eg. Amy Charewicz). To contribute financially (any amount accepted) visit:  
<https://www.bethematch.org/Support-the-Cause/Donate-financially/>

**Walk-Ins accepted but reservations would be preferred.**

Call 773-619-0132 to reserve a time.

Call 847-228-5333 for more information.